

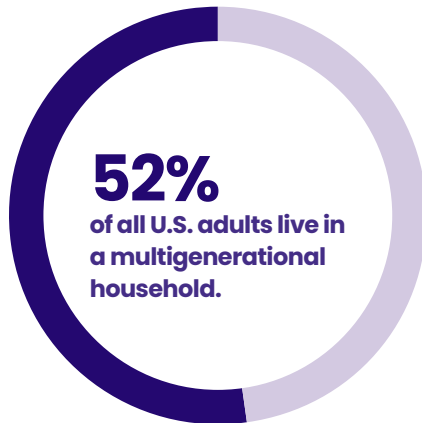


Support employees supporting their loved ones

Help caregivers by offering MASA medical transportation coverage to everyone in their family — even aging parents.

Working-age caregivers feel the strain — at home and work.

Adults caring for dependent children and their aging parents simultaneously — known as the sandwich generation — can especially feel squeezed and under-supported.



24.6
million working-age adults (16-64) assist with care for family member, relative, or friend.

12.9
million working retirees (age 65+) are expected by 2030.

Source: Milliman, data compiled Dec. 1, 2023.

Introduce an additional option for care to your clients and help meet the needs of their employees with Family+ from MASA. Offering financial peace of mind goes a long way when juggling appointments, unexpected emergencies, and more for themselves and their loved ones.

Family+ transportation coverage to include:



911 ground ambulance



911 air ambulance



Hospital-to-hospital transfers after primary emergency



Post admission continued care transportation coverage

The benefits listed, and the descriptions thereof, do not represent the full terms and conditions. For additional information and disclosures about MASA plans, click or visit <https://info.masamts.com/masa-mts-disclaimers>. Information on additional adults or dependents can be completed after membership activation by calling Member Services at 800-643-9023.



Want to learn more about Family+?

Reach out to your MASA Sales Director.